

36



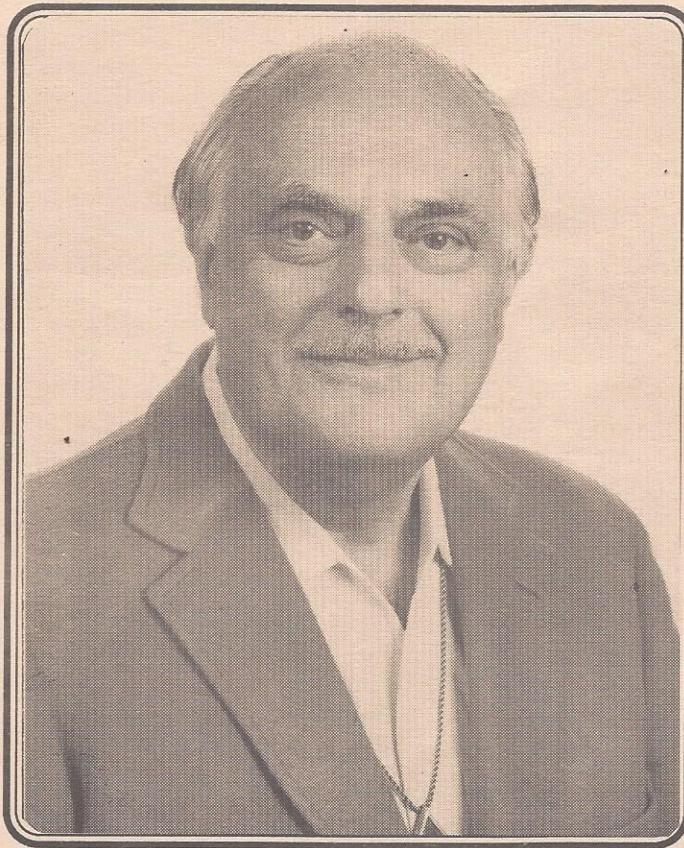
# Psychic Research Newsletter

Vol. 8 No. 1

*from the research laboratories of Marcel Vogel, Ph.D.*

Jan. - Feb. 1991

## In Loving Memory



**Marcel J. Vogel**

April 14, 1917 – February 10, 1991



## EULOGY FOR MARCEL

by Dr. Bernard McGinity

Those of us who are scientists or physicians and who worked with Marcel Vogel were well aware of his scientific achievements: his extraordinary work with phosphors, bioluminescence, luminescent paints and the design of magnetic disc coatings in computers. He was one of the most prolific scientists in IBM history, with over 100 patents in his name. Yet, until his recent honorary Ph.D., he possessed no official university degree. He made his mark because of the brilliance of his mind, his prolific ideas, and his seemingly limitless creativity.

But it is not his scientific work that I want to talk about. For it is for his work with Spirit, his great spiritual strength, his wonderful capacity to love that I will always remember Marcel.

I was one of a group of 16 physicians privileged to work with him over a number of years with body energies, especially the capacity to focus healing energies with crystals in the treatment of illness. All of us had an extensive background in acupuncture and appreciated the ability to manipulate body energies. Under Marcel's guidance, some of us began to learn the process of transmitting thought, especially loving thoughts, unconditionally, to our patients. It brought to us an even greater capacity

to appreciate the power of the mind to influence illness, the power both to heal and exacerbate disease. And, most important of all, to appreciate the incredible presence of unconditional love and its capacity to trigger transformative shifts in a patient's psyche.

Marcel served for me as a spiritual mentor. He was a truly devote, yet iconoclastic Catholic with a passionate love for Christ, and whose devotion was part of his very breathing. Yet he embraced with a deep understanding the teachings of the Eastern religions with an especial love and admiration for the Lord Buddha. He possessed the ability to see beyond the confines and formal structure of church teaching to appreciate the underlying principles in all devote religions. Marcel would have been just as comfortable in a Tibetan monastery as he was in this Church. And just as comfortable and compatible in the presence of the Dali Lama as he would in the presence of the Pope.

Marcel emphasized the power of meditation to heal and guide our lives. I would like to invite you to join with me now in a meditation prayer to, for and with Marcel.

Please sit comfortably in your chairs, take some deep breaths and in a true ecumenical spirit rest with your palms turned upward and the tips of your thumb and forefinger joined together. Now close your eyes.

*continued on page 3*

### Psychic Research Newsletter

Vol. 8 No. 1, January/February, 1990.

Published six times per year.

Psychic Research, Inc. • 1725 Little Orchard St., Unit B • San Jose, CA 95125  
408/279-2291 • FAX 408/279-2295

Editors: Dr. Marcel Vogel, Jennét Grover

Subscriptions are \$35 for 12 issues for United States addresses; back issues are \$4.00 each; a complete set of back issues is \$35.00 and starts from 1984 (see order form for rates outside the U.S.). Psychic Research, Inc. is a non-profit corporation using scientific research and education to aid humankind. Contributions to support P.R.I. are tax-deductible to the extent permitted by law.

© 1991 by Psychic Research, Inc.



*continued from page 2*

First of all visualize Marcel. See him clearly: that big teddy bear of a man with his great capacity to love.

Ask yourself, what lessons did he teach you? How did he serve as an example to you? In what way did he influence your life?

Now send Marcel your true appreciation of what he did for you and what he meant to you.

It is said that all great teachers pass on their energy, their knowledge, and their wisdom. Ask Marcel to pass on to you whatever energy, knowledge or wisdom you need from him.

Finally, let us all join together in sending him a wave of love. Thank him for being part of our lives. And send him on to his highest spiritual evolution with our blessings and with all our love.

I would like to close with a prayer of St. Francis of Assisi—a prayer that embodies the essential spirit and purpose of Marcel Vogel's life.

#### **A PRAYER OF ST. FRANCIS OF ASSISI**

*Lord, make me an instrument of Thy peace*

*Where there is hatred*

*Let me sow love;*

*Where there is injury,*

*Pardon;*

*Where there is doubt,*

*Faith;*

*Where there is despair,*

*Hope;*

*Where there is darkness,*

*Light;*

*Where there is sadness,*

*Joy.*

*O Lord, grant that I may not*

*so much seek to be consoled as to console;*

*To be understood as to understand;*

*To be loved as to love.*

*For it is in giving that we receive;*

*It is in pardoning that we are pardoned;  
And it is in dying that we are born  
to eternal life.*

[Ed. note: This eulogy was delivered by Dr. McGinity, one of Marcel's closest friends, at Marcel's funeral, on Thursday, Feb. 14, 1991, at St. Leo's Catholic Church, in San Jose, CA. We thought that those of you who could not be with us at the ceremony would want to share these sentiments. — JG] △

## **THE POWER OF LOVE**

*by Marcel Vogel*

In previous articles I have written about various forces, such as light and sound. Now I would like to discuss the most profound force in nature, namely, the power of love itself.

When we love, we bring order, balance and coherence onto whatever we focus our mind. The power of love is not electromagnetic, but informational. It lifts us up so that we can function at a higher level of being. Christ came two thousand years ago to tell us, among many things, that we should love our neighbors as our self. In all of the years since the time of Christ's preaching, it has been given that we should love one another. But truly, what is love?

Is it possible for us to begin to analyze and quantify this force and give it its proper position and acknowledgment in the hierarchy of the forces of nature? P.R.I. is devoted to a careful, serious investigation of this very question: What is love?

We have found, by trial and experimentation, that the cutting of a quartz crystal in a special double-terminated form will give to this

*continued on page 4*



*continued from page 3*

shape geometry the capacity to store that force we call love. This crystal then becomes a transducer and amplifier for this force and can then be directed by an act of will to another individual or to matter.

As the field or force has no dimension, it is only when it moves that we can experience and observe a magnetic field surrounding the crystal (as measured with the gaussmeter), in which the thought of love has been imprinted.

The transfer of this thought of love in the crystal to matter occurred to me in 1984. I thought that if I were to spin a fluid around a crystal, I might be able to transfer this force, or information, to the fluid. We did this and, to our great joy and surprise, the water we used changed in taste and exhibited a small, but significant change in pH. This started our research.

We brought infrared and ultraviolet spectrophotometers on board and did the spectrophotometry of the water and discovered a new state to the water which I call a **lyotropic mesophase** a transfer of the energy of love to the water. This water now has been "structured."

We persisted for years in this endeavor until we came to Phase 3, the structuring of wines. I built a larger apparatus and began structuring wine from the Sycamore Creek Winery in Morgan Hill, California, with the thought of love imbued into the crystal. We found that the number of times the wine passed around the crystal was critical in the determination of the optimal information transfer to the wine. The abrupt change in the quality of the wine was immediately noticeable.

This change was permanent and gave the quality to the wine of being an aged and finished wine. Thousands of gallons were finished and sold. Eleven awards were given to these wines in California wine competitions.

We found we could also treat fruit juices, such as apple, grapefruit and orange. When the proper conditions were applied to this structuring, namely the proper field of love applied to the crystal, and the juice was spun around the crystal, the juice now was enhanced in flavor. In addition, the juice exhibited a resistance to fungus, bacteria, and deterioration normally experienced when left out at room temperature.

I have one sample which has been on our shelf for 6 months. The control has deteriorated and the treated sample is still palatable. This opens a whole new field for the preservation of food.

Can it not mean as well that when we love ourself and give to our own being that volume of love our body requires that disease as we think of it, will not attack this body? How can we measure this energy of love? By the same token of the crystal, where we imprint it with our thought. We have in our laboratory, the Omega 5, which can give a numerical value to that subtle force which is contained within that crystal.

We can now begin to measure the magnetic field that emanates from a crystal charged with love. So, not only can we observe with an unconventional instrument, but also with a normal tool of science, a gaussmeter.

As I said in the beginning, the act of loving brings order, balance and coherence into that body to which that love is directed. We have observed this to be true when we have been able to direct it from a crystal to fluidic materials, such as wine and juices, and we have observed remarkable changes that have taken place in these materials.

Love is a necessary food that we all need, not only for ourselves, but for the good of our families, the balance of our nation and the stability of the world as a whole. Contrast what I am saying to you now to the conflicts that are

*continued on page 5*



*continued from page 4*

going on throughout the world. If we started to truly love one another, there would be no war. We would then have peace on earth and good will to all humankind.  $\triangle$

## THE DECLING OZONE LAYER

*by Bob Crane*

When scientists took a satellite picture of the ozone layer over the South Pole in the months of September through November of last year, they noticed a very large "hole" in it that covered most of Antarctica.

Within this hole, the amount of ozone had declined by as much as 50 percent. This is a potentially disastrous development for the earth, as ozone gas (an oxygen molecule with three atoms instead of two), absorbs a great deal of the ultraviolet light that is coming toward the earth's surface.

It has been estimated that if there were only a three percent increase in this type of light, all plant life on the surface of our planet would be destroyed. With the end of plant life, the end of animal life would soon follow.

A theory that was developed by Professor MacElroy of Harvard University, predicted that the cause of the decline in the ozone layer could be attributed to the release of chlorine and bromine gases into the atmosphere.

Chlorine gas, in the form of chlorofluorocarbons (CFC's), is used in refrigerators and air conditioners. Bromine is used in the semiconductor industry and in other high tech industrial processes.

Even though MacElroy's theory has not gained wide scientific acceptance, CFC's have been banned by many nations, including the

U.S., but there are currently no restrictions on the use of BROMINE GAS.

This gas actually IS MORE DESTRUCTIVE TO THE OZONE THAN CHLORINE GAS, but much less of it is used and released into the atmosphere.

The "ozone cycle" that governs the production and use of ozone in the upper atmosphere and ionosphere, is another example of the delicately balanced environmental system that must operate if the earth is to support life successfully.

Oxygen rises on convection currents to the top of the atmosphere where the ionosphere begins. Here it is bombarded by high energy particles from the sun and is ionized into charged oxygen ions. Some of the ions are able to reform into the larger ozone molecule, and these fall

down to a zone or layer in the upper atmosphere that forms at an altitude of about 60 miles. This layer is able to absorb the same wavelengths of ultraviolet light (from 2800 to 3300 Angstroms; see P.R.I. Newsletter, Vol. 3, #6), that are absorbed by the DNA molecule and, in so doing, protects them from excess amounts of these damaging radiations.

Chlorine and bromine interfere with the ozone production cycle by getting in the way of the oxygen ions that are colliding with one another in the ionosphere. These atoms are heavier than the oxygen atoms, and they absorb some of the oxygen atom's energy whenever they collide with them.

As the oxygen atoms and ions lose energy, they are less likely to form into ozone molecules, so the total production of this vital gas is decreased by the presence of chlorine and bromine in the ionospheric zones, where it is normally produced.

*Continued on page 6*

Once the chlorine and bromine atoms reach





*continued from page 5*

THE DESTRUCTION OF THE OZONE LAYER MAY BE THE MOST SERIOUS PROBLEM THAT WE MUST FACE IN OUR IMMEDIATE FUTURE IF WE ARE TO SURVIVE ON OUR PLANET.

We must not only continue to search for substitutes for CFC's, but we must fully acknowledge the work of MacElroy, who predicted the decline in the ozone layer, and extend the ban to include the dangerous gas bromine.

In addition, we must work to eliminate all unnaturally occurring chemicals from our atmosphere, as it is likely that they, too, are contributing to a decline in the ability of the entire ionosphere to act as a protective shield for life on the surface of our planet. △



## SPECIES LINK

*by Penelope Smith*

*The following is an excerpt from the premiere issue of SPECIESLINK, The Interspecies Telepathic Communication Network Newsletter by Penelope Smith, Animal Communication Specialist.*

It's an exciting time on planet Earth for the linking up of all species in the universal language - telepathic communication, communion and understanding. A few years ago, one would not see descriptions of animals as being intelligent (beyond the limited general notions that many humans in our culture have accepted as true), in major newsmagazines, nature publications and programs, animal-related conferences and in the general public view.

The old thought was that animals were lower on the evolutionary scale, with less complex brains and therefore incapable of the thoughts,

feelings, purposes and accomplishments of humankind. Any suggestions, perception or awareness of "higher" thought processes or communication abilities in "sub"- human animals was to be scoffed out of existence.

Blinders were to be kept on during "scientific" investigations, eliminating any possible awareness or investigation of animal intelligence beyond the accepted notions.

Fortunately, all that is changing. Animals are now credited with complex languages of their own, emotions and the potential for thought processed similar to humans, without the immediate put-down of anthropomorphism - the term used to prevent acknowledgment that other animals can have feelings similar to our own. The word is out! Animals are intelligent beings, and we humans may even be able to communicate with them directly!

Current investigations into interspecies communication mainly concern communicating with animals indirectly, getting them to learn our symbols and communicate in human language or respond to our cues. However, there is a growing realization, an unleashing of cultural awareness, that we all are linked physically, mentally and spiritually. The idea that receiving thought communication from animals is all just childish imagination and projection, is dissolving. Maybe we all can communicate mind-to- mind and even understand each other!

The telepathic link was there all the time, throughout the ages, veiled by misunderstanding, disrespect and ignorance on the human end of communication, due to ideas about animals' lack of ability, which inhibited and suppressed human understanding. Our problems with destroying the planet's ecosystem and our lopsided relationship with the rest of nature, based in the human ideas of separation and dominance, may be largely resolved



through interspecies respect and understanding.

Well, the order is changing and we're at the vanguard - spreading the news and the education of how to rediscover the skills of direct, interspecies telepathic communication. I have been communicating with animals telepathically all my life, counseling and healing with animals and their people for almost twenty years, and I rejoice in the burgeoning increase in awareness in the last few years, which has encourage many people to rediscover, develop and use their interspecies telepathic abilities. We can all do it if we take the time to recover what was lost.

The "SPECIES LINK NEWSLETTER" is intended to support people who are dedicated to helping link up the species through direct communication and educating others how to do so. We hope that direct telepathic communication with other species will eventually be restored as a natural ability for all humans. Non-human species already know how to telepathically communicate and do so among each other. We can learn from our animal brothers and sisters and help to create more harmony with all of life.

The work is powerful, beautiful and life changing. May the ripples spread, so that all the world's beings are lovingly and directly interconnected in mutual understanding.

*The Species Link Newsletter will be published quarterly by Pegasus Publications, P.O. Box 1060, Point Reyes, CA. 94596; 415-663-1247. For information regarding subscriptions, animal consultations, tapes, literature and/or seminars, contact Penelope Smith at the above address.*

△

## REFLECTIONS OF A HEALER

by Linda Laing

As I enter the New Year, I am spending time reflecting on my work of the past few years.

In 1987, I began a personal journey of spiritual growth and development. My journey took the form of researching the use of the Vogelcut™ healing crystal and the intended love used in helping other people with their spiritual growth.

This journey started with three, eight day workshops under the tutelage of Marcel Vogel. He instructed us in the use of his specially designed crystals and encouraged us to explore personal growth and to develop our own individual techniques when using the crystals.



Since the basis for crystal work is universal love, Dr. Vogel imposed a requirement that we work only with people who have a belief in a God source. In applying the crystals to restructure the subtle energies needed to bring the bioenergetic bodies into balance, I have focused on establishing a personal sense of well-being and integration of these energies to balance Body, Mind and Spirit.

In the beginning, my research into the use of the crystal was done with the basic techniques taught by Dr. Vogel. My first clients in Indianapolis were people who normally worked only on one issue or ailment.

I saw these clients in person and, during this period of personal growth, I worked primarily on releasing the trauma of physical pain that

*continued on page 10*



## EXPERIMENT #89

### MEASURING YOUR LOVE INDEX

**Materials Required:**

- 6 small plants from a nursery, all about the same size.
- 4 single-terminated natural crystals (can be purchased at most rock shops)

Hold two of the crystals in your RIGHT hand. Draw your breath in, look at the plant and think what a wonderful plant it is. Create an image of the plant's well-being and pulse your breath into the crystals. Take these two crystals and put them into the soil of the potted plants and put the plants aside.

Take two plants as control and put them in another room.

Place the other pair of crystals in your LEFT hand, draw your breath in, look at the remaining two plants and find fault with them. Pulse your breath into the crystals and stick these in the soil.

Number the plants 1 through 6. Water them evenly. Observe and record in a notebook the growth characteristics of each of the plants.

---

If you have equipment or other items that have been on loan to our laboratory and you wish to have them back, please send a full description of this/these item(s) and written proof of ownership. We ask that you respond to this request within the next 10 days.

Thank You.

## EXPERIMENT #90

### MEASURING YOUR LOVE INDEX

**Materials Required:**

- a packet of seeds
- 3 flower pots
- potting soil

Take 10 of the seeds, put them in the palm of your right hand, draw your breath in, close your eyes, and visualize the seeds growing at an accelerated rate while sending them love and pulse your breath. Plant these seeds in a pot.

Wash your hands in water and then pick up 10 more seeds and put them in a control pot with no thought.

Now take 10 more seeds, place them in your left hand and visualize the seeds being stunted and dwarfed and pulse your breath. Put these in one of the pots and observe. Record your results.

From these experiments you can prove for yourself the power of your own thoughts.

[Ed. note — Marcel did similar work with cucumber seeds at the laboratory of noted scientist Fritz Popp in germany — JG].

---

### Scientists and other interested parties:

---

Please stay in touch with us. Our research will continue and we would like to encourage your support in our endeavor.



## THE MARCEL VOGEL RESEARCH ENDOWMENT FUND

The Marcel Vogel Research Endowment Fund has been created to enable P.R.I. laboratories to become self-supporting and to allow Marcel's research to continue. Contributions to this fund are now more critically needed than ever.

Psychic Research, Inc., is a non-profit corporation using scientific research and education to aid humankind. The research we are doing, the structuring of fluids, has global environmental and health implications. We hope to apply our new technology for:

- 1.) alleviating water pollution
- 2.) halting the growth of bacteria and other organisms in water, juices and even solid food stuffs.
- 3.) reducing the need for harmful chemical additives in fluids and foodstuffs.
- 4.) use in the medical industry with specific applications for dialysis and organ transplants.
- 5.) numerous other applications.

We have opened an account with Dean Witter in San Jose, California, which receives only those donations that have been specifically dedicated for the Marcel Vogel Research Endowment Fund. Other donations are automatically applied towards P.R.I.'s general operating expenses.

All contributions to support P.R.I. are tax deductible to the extent permitted by law. Donations may be sent to Psychic Research, Inc., and checks should be made out to either P.R.I. or Dean Witter, F.B.O. Psychic Research, Inc.

Thank you so much for your support. We are here to serve. Allow us to continue with this important mission.

If you have any questions regarding this fund and how you may help, please do not hesitate to call and ask for Jennét.

### P.R.I. BOARD OF DIRECTORS

#### Willis Downing, Jr., Ph.D. Chairman.

Professor of Electrical, Computer, and Biomedical Engineering, California State University, CA.  
Member of the Biomedical Engineering Society.  
Member of the Inventors Workshop International.  
Member of the IEEE.

#### Bernard McGinly, M.D. Medical Community Liason.

Practising Medical Doctor, Acupuncturist.  
Consultant and Examiner for the California State Acupuncture Advisory Board. Sacramento, CA.  
Diplomate American Academy of Family Physicians.

#### Chuck Mignosa, Business Coordinator.

Advisory Statistician for IBM.  
Consultant & Instructor on Statistical Design & Evaluation of Experiments.

#### Mary Vogel

#### Dan Zavela, Recording Secretary and Treasurer.

Computer Systems Consultant for IBM.

### ADVISORY BOARD

#### Robert Fritchle

#### Bernard Grad, Ph.D.

Associate Professor, retired, McGill University.  
Member, American Association for Cancer Research.

#### Jennét Grover

P.R.I. Lab Administrator and  
Assistant Director of Research.

#### Leonard Worthington, Esq.

Board of Directors of the Lawyers Club.  
Director, retired, Hastings College of Law,  
University of California.



*continued from page 7*

was imprinted on their etheric fields. These cases included basic physical ailments from back pain to cataracts.

For example, a woman with cataracts wanted to see again and, through our work, her eyesight returned. During this period it was necessary to continually remind clients that the work was being done on the etheric, as opposed to the physical plane.

In addition, I worked on a little girl with a malignant brain tumor before she chose to leave this planet. During the work, the child's estranged family was pulled together through love; a family healing took place.

I also had the opportunity to work with Wes, a man living in Miami, Florida. He was bedridden and we had to find a way to work together in spite of a six state separation.

I found that, as Dr. Vogel had said, energy is all-encompassing and without boundaries. In working with Wes via telephone, he was eventually able to get out of bed. He had not been able to do this for several years.

After one week of working together, he was sitting in a chair and, within six weeks, he was walking around shopping centers. Through this experience, I discovered that the telephone can greatly enhance my sphere of clients and provide an expansion of my therapy techniques.

During this period, I also found I could send telepathic energy to assist others. I was asked to do this for a young man who was attacked and stabbed while camping in Kentucky. His injuries were so severe he could not be moved to a hospital capable of caring for his needs.

I sent telepathic energy to him and the following morning, to the amazement of his doctors, his improvement allowed him to be released for transfer to another hospital. He has

since totally recovered, reinforcing that enlightenment is the goal, healing is the by-product.

As I grew and changed and others grew and changed, clients began to look towards using this type of therapy for a number of personal growth issues.

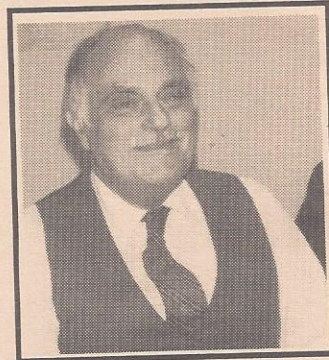
The journey in 1989 and 1990 led to discovering inner talents that I have incorporated into my work. These techniques include massage, the use of essential oils, color therapy and hands-on therapy.

In retrospect, I remember the journey sometimes gets discouraging and heavy with resistance to change, resistance to trust and resistance to alternative processes for self-growth.

However, my clients' successes and love and encouragement keep me going. The love, the strength and the support of my family allow me to continue my research even when the journey feels long and hard.

As I grow and change, so do the people I have been working on this past 3 1/2 years. It is with this knowledge and confidence that I look forward to 1991, its changes and challenges. With this hope, faith and vision, I will be able to touch the lives and hearts of even more people on our planet and to pass along the true secret of therapy - LOVE. △

*Linda Laing has just moved to Gulf Breeze, FLA. and can be reached at 909-932-3639.*



Marcel Vogel reviewing his results.



## CERTIFIED VOGEL CRYSTAL PRACTITIONER WORKSHOPS

### RUMI DA (Ron Carson)

- |                   |                   |   |
|-------------------|-------------------|---|
| May 5 – July 10   | CANADA TOUR       | Contact Gayle Hickox at The Crystal Connection, 6531 – 11th St., Edmonton, Alberta, Canada. 403/437-0002.                     |
| July 17 – Aug. 28 | GERMANY INTENSIVE | Contact Wolfgang Erdorf in Cologne, Germany. 49-221-326-814.  |
| September ??      | AUSTRIA/DENMARK   | Austria Tour — Contact Aiko Lambrecht in Austria. 43-222-431-220.<br>Denmark Tour — Contact Rumi Da in Florida. 407/699-1672. |
| Oct. 14 – Oct. 30 | INDIA             | Contact Shirley Chambers, at the Karin Kaballah Center, 2531 Briarcliff Rd. N.E. #217, Atlanta, GA., 30329. 404/320-1038.     |

If you are in the United States, call Rumi Da at 407/699-1672.

### CAROL THOMAS-KLAUSNER

- |               |               |   |
|---------------|---------------|---|
| Sept. 12 – 15 | BOSTON, MASS. | Contact: Marga Pragsta at 401/461-1477 at the Polarity Wellness Center. |
| Sept. 21 – 22 | BOSTON, MASS. |   |
| Open          | PHOENIX, AZ.  | Contact: Carol Thomas-Klausner at 602/955-3167.                         |

### LINDA LAING

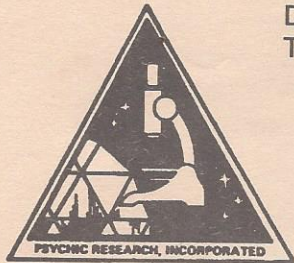
- |         |         |                                |
|---------|---------|--------------------------------|
| Monthly | FLORIDA | Contact Linda at 904-932-3639. |
|---------|---------|--------------------------------|



WE WOULD LIKE TO EXPRESS OUR THANKS TO THE FOLLOWING PEOPLE WHO HAVE DONATED THEIR TIME AND LOVE TO P.R.I. TO HELP US IN OUR RESEARCH: Barbara Brittingham, Bob Crane, George Dong, Joyce Falk, Jordan Gruber, Mary Lamson, Chuck Mignosa, Mary Ying, Clyde Wright, Leonard Worthington and Dan Zavela.

**CRYSTAL THERAPY INSTRUCTORS:** The following people can provide interesting and informative lectures and demonstrations on crystal healing. They have been trained by Dr. Vogel and speak knowledgeably in relation to their particular specialties. All of these instructors will travel. **Rozanne Bazinet** Ph.D. MFCC, Sacramento, Ca. 916-489-2256/ **Ron Carson** (Rumi Da), Orlando, Fla. 407-699-1672 / **Linda Lalng**, Gulf Breeze, FL 904-932-3639 / **Jennét Grover**, P.R.I. staff. / **Judy Mingo**, Millbrae, CA 415-259-9416 / **Dale Olson**, Eugene Or. 503-683-8418 / **Melinda Schultz**, Hawaii 808-732-8687 / **Carol Thomas-Klausner**, Phoenix, Az. 602-285-1628.

**THANK-YOU FOR YOUR GENEROUS SUPPORT AND DONATIONS.** The P.R.I. research laboratory has been supported primarily by Marcel's lectures and by the sales of crystals, the medallion, newsletters and audio and video tapes. The more private funding, the more time Marcel will have to supervise and perform research in the laboratory. Remember, P.R.I. is a non-profit corporation which provides research and education to aid humankind. Won't you help us to help you?!



**PSYCHIC RESEARCH**  
1725 LITTLE ORCHARD ST. "B"  
SAN JOSE, CA 95125

DATED MATERIAL/  
TIME VALUE

Non-Profit Organization  
U.S. Postage PAID  
San Jose, CA  
Permit No. 5445

ADDRESS CORRECTION REQUESTED